



Computing Services Centre  
香港城市大學  
City University of Hong Kong

# USER GUIDE FOR **USING AV EQUIPMENT**

Yeung Kin Man Academic Building

5/F B&Y-Zone Classroom (Single Projection)

For IT or AV support, please contact the CSC Service Desk at **3442-8340**

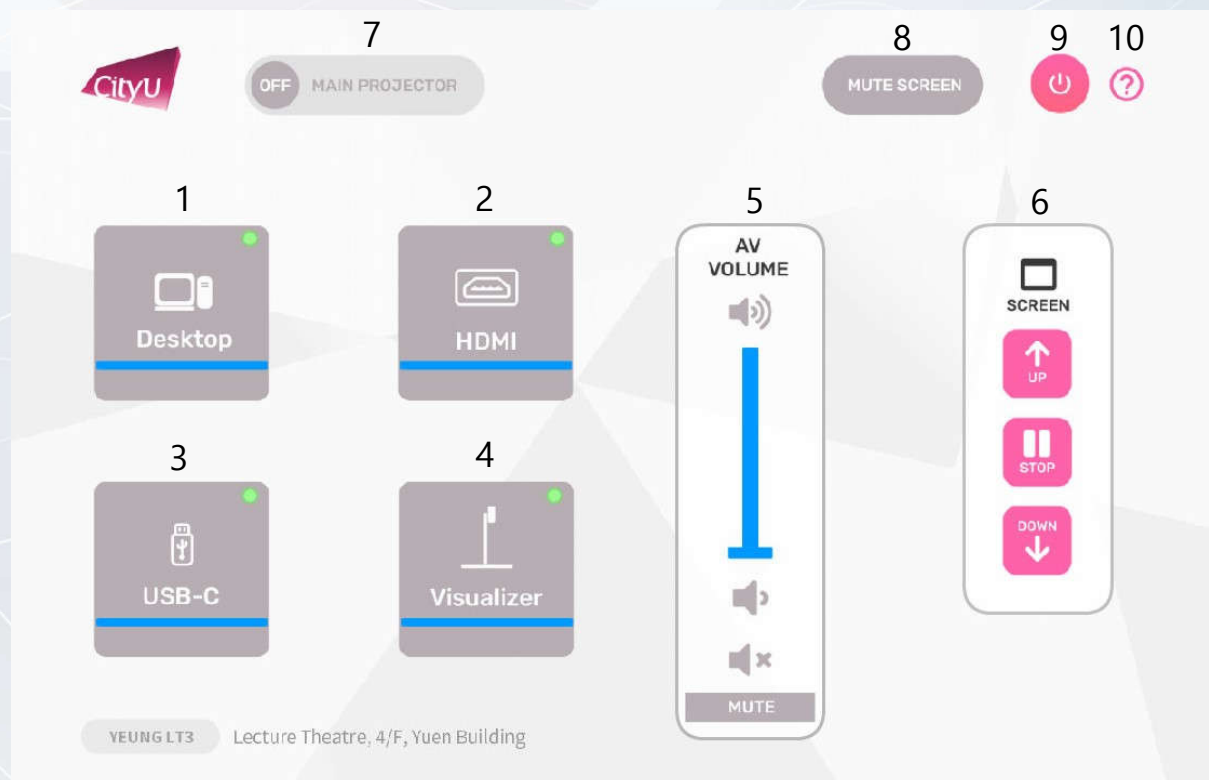
## AV Control Panel

### Display Source Select

1. Desktop Computer
2. HDMI Input (Use HDMI devices)
3. USB-C Input (Use USB-C devices)
4. Presentation for Visualizer

### Other Control

5. Volume Control
6. Screen Control (Up/Stop/Down)
7. Projector (On/Off)
8. Mute Projector(s)
9. System Off
10. Help information



# Using AV Equipment

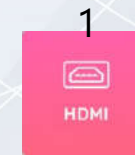
## Operation procedure of the Desktop Input

1. Press "Desktop " button



## Operation procedure of the HDMI Input

1. Press "HDMI " button
2. Connect the device to HDMI cable



HDMI

## Operation procedure of the USB-C Input

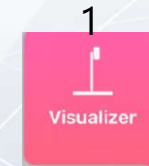
1. Press "USB-C" button
2. Connect the device to USB-C cable



USB-C

## Operation procedure of Visualizer Input

1. Press "Visualizer" button



## System OFF

1. Confirm Power off
2. Cancel Power off

